



Xcam – Ultracam

Guida veloce alla programmazione
by **CARTAPIRATA**

How to Program the Xcam with his programmer

I try to explain how update the “Xcam” with the programmer.....If you don't have the Nextwave programmer you can also try with the Twin Programmer in the Ucas mode.....Don't try it with a magic programmer: this don't work.

What you need

1. Program X-Cam Loader
2. Personal Computer
3. Serial **null-modem** Cable
4. Xcam Programmer
5. The “Xcam”
6. The Firmware xcrypt
7. SofCam.Key

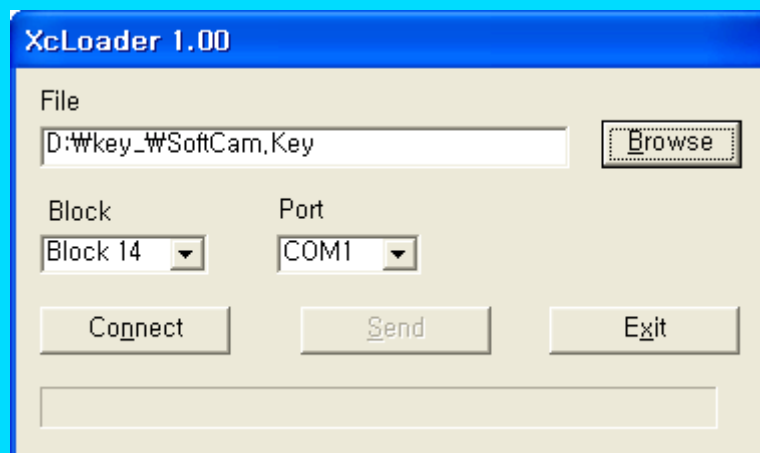
Important:

Power up for reciever and select a free to air channel like RAI 1

Connect the serial null modem cable with your pc and programmer. Beware, select the correct com port for the Program Xcloader. When the serial cable is connected with your pc and your Programmer, you can put the program in the X-cam (the leds to under closed point and there glow up a red lamp).

The procedure is the same for upload new firmware or the key. In a virgin Xcam, first load **new firmware on block 2** and after load the key with this procedure.

1.Select the rows softcam.key trying it, click on push-button “BROWSE”, **select block 14 (15 if you have problem to up), before push the button “CONNECT”**



2. push connect, waiting.....



3. Power on the decoder, go to option common interface, submenu UPDATE

4. Push "OK" to activate loader

5. Start the Download.....finished, you have inserted correctly yours key. Every time you upload firm and keys, you must restart your decoder. Putting on the receiver, go into the CI-menu again, go to settings and select "default Key".

How to Program the Xcam with FUNCARD 6

(only for firmware up to 1.04)

When your X-cam has a firmware higher than the Xcrypt 104 is't possible to update the cam in the future with Funcards 6

What do you need

1. Two funcard 6
2. Programmers for funcard 6
3. Software to programming cards
4. App_card1.hex
5. App_card2.hex
6. Xflash.hex

Go into CI menu click on " Xcam" and you can see this in the menu of your cam:

- Card Info
- Settings
- Edit Keys
- Update
- Card Update

Select card update, and follow the instruction on screen displayed. The think is very easily. With your decoder off, insert your "Xcam" in one slot. When inserted, power on your receiver. Go to it's menù and select the "Xcam". Click and go to sub-menù "Card Update". Click on it and insert your firts funcard 6 (or upper) programmed with the 1° part (eg: Xcam1064_1.hex). When finish the procedure, it demand you the 2° funcard programmed with the last part of updates (Xcam1064_2.hex). Extract first funcard and insert the second. **DO NOT RESTART THE RECEIVER. At least you must restart the receiver.**

Attention: remove all card from cam slot when finish the upgrade but only before you power on again the stb.

To upload the keys the procedure is the same; You can use only one funcard for upgrade (funcard 2 is good for this operation). Repeat the first part: access to the menù and go.....Putting on the receiver, go into the CI-menu again, go to settings and select "default Key"That's all.....

Best Regards From

CARTAPIRATA



XCAM - ULTRACAM

Technical Details



Common Interface (P/N : 030723) Ver. 1.0

Supported in the latest Ver. 1.064 :

Irdeto
 Irdeto II
 BetaCrypt
 VIACCESS
 VIACCESS II
 TPSCrypt
 Seca
 Seca II
 Nagravision (with selectable BoxKey)
 Conax

- Original Card (Ver. 7.0) TPS.....👍 Test OK
- Original Card (Ver. 7.0) CANALSATELITE.....👍 Test OK
- Original Card (Ver. 7.0) CYFRA+.....👍 Test OK
- Original Card (Ver. 7.0) Taquilla.....👍 Test OK
- Titanium Card.....👍 (SECA II) Test OK
- Titanium Card.....👍 (Conax) Test OK
- Fun Card.....👎 (6 in 1) Test Failed
- Gold Card.....👍 Test OK
- Pentacard VR1.....👎 Test Failed
- Pentacard VR3.....👎 Test Failed

Best Regards From

CARTAPIRATA